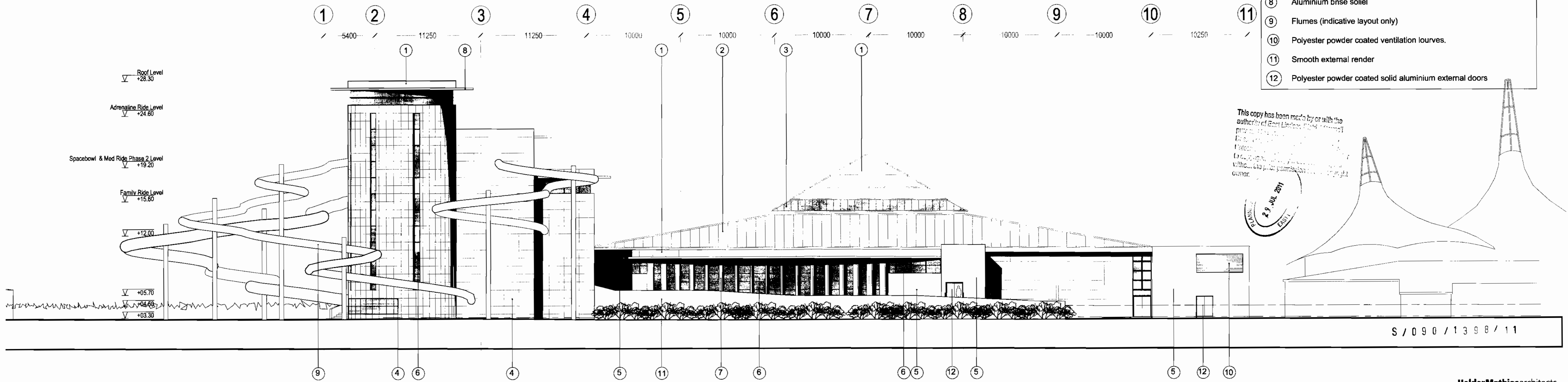


PROPOSED EAST ELEVATION

Proposed Materials Key

- ① Polyester powder coated composite metal insulated roof panels.
- ② Polyester powder coated metal roof panel overcladding incorporating insulation
- ③ High level double glazing roof glazing.
- ④ Polyester powder coated smooth metal panel rainscreen cladding
- ⑤ External insulated render system
- ⑥ Polyester powder coated aluminium double glazed curtain walling with vertical mullions and silicone joint detail to transoms.
- ⑦ Vertical external aluminium solar shading to curtain walling
- ⑧ Aluminium brise soleil
- ⑨ Flumes (indicative layout only)
- ⑩ Polyester powder coated ventilation louvers.
- ⑪ Smooth external render
- ⑫ Polyester powder coated solid aluminium external doors



PROPOSED WEST ELEVATION

S / 0 9 0 / 1 3 9 8 / 1 1

PLANNING

NOTE: Layout of flumes indicative only, subject to specialist design.

HolderMathiasarchitects

Splash Pool Re-development
 Bullins, Skegness
 Boume Leisure Ltd

Job No. 3720
 Draw No. AL(00)20
 Rev. _____

Title: PROPOSED ELEVATIONS - EAST AND WEST

Date	Drawn	Check	Status	Scale
12/07/11	RC	JTW	Planning	1:200 @ A1

Card# 020 2049 8681 London: 020 7287 0735 www.holdermathias.com